

Reworld[®]
.....

Sustainable
Waste Solutions



Be waste ready.

Sustainability Report 2026

Sustainability is good business.

Sustainable business practices help grow local economies while meeting the future needs of our planet and its people.

For our customers, sustainability is a business imperative as they aim to reduce liability and reputational risk, gain market advantage, attract top talent, strengthen supply chains and meet stakeholder expectations.

At Reworld, we help our customers and partners turn waste challenges into opportunities.

Assured Destruction

Keep sensitive and illegal materials out of unauthorized channels with audit-ready assurance.

Manage PFAS risk with proven destruction capabilities.

Brand Protection

Reduce business risk by destroying proprietary and recalled products.

Protect your brand from legal and reputational risk.

Renewable Energy & Metal Recovery

Drive more circular local economies by turning waste into local base load energy for industry and communities.

Recover metals to reduce reliance on imports and virgin materials.

People & Partnerships

Meet customer expectations, support local economies and provide quality jobs.

Collaborate and engage with industry leaders.

Public Health & Environment

Manage end-of-life materials in facilities that are globally recognized to be protective of human health and the environment.

Reduce climate impact through avoided greenhouse gases by waste diversion.

Contents

Introduction

- 4 Message from our Leadership
- 6 Advancing as a Leader in Sustainable Waste
- 7 2025 Sustainability Highlights

Our People

- 9 Our Community Focus
- 10 Partnering with the Long Island Community
- 11 Health and Safety – A Core Value
- 12 Investing in Our People
- 13 Employee Growth and Development
- 14 Our Values in Action
- 15 Recognizing Our People

Be Waste Ready

- 17 Our Role
- 18 The Waste Hierarchy – Our Guide
- 19 Our Circular Solutions
- 20 Reimagining Circularity for Our Customers
- 21 Infrastructure and Services
- 22 Building the Collaborative Waste Economy
- 23 Driving Circularity for Industrial Hubs
- 24 Decarbonizing Industrial Sectors
- 25 Sustainability Starts Within

Our Solutions and Impact

- 27 ReDirect360
- 28 ReAssure PFAS Destruction
- 29 Our Carbon-Negative Solutions
- 30 Thermomechanical Treatment
- 31 ReKiln Fuels
- 32 ReDrop
- 33 ReMove and Industrial Services

Appendix

- 35 Data Tables
- 36 Glossary of Terms

Throughout the report, we have featured photos from our employees as part of the Sustainability Affinity Group’s efforts to highlight our employees’ personal connection with sustainability.



About this Report
 This report covers activity in calendar year 2025 unless otherwise mentioned.
 Visit Sustainability at Reworld reworldwaste.com/our-commitment/sustainability for additional information.

Fall Beauty, Brian Aerne, Environmental Area Manager
 Reworld Huntington, Long Island, NY

Advancing Scalable Solutions

Innovation is moving Reworld® into its next chapter. By strengthening our platform, expanding our capabilities and creating a more connected customer experience, we are delivering measurable gains in efficiency, transparency and waste diversion. We are defining the future of sustainable waste solutions.

As we reflect on the past year, I am encouraged by the progress we have made and the momentum we are building. Continuous improvement is central to how we operate at Reworld, shaping how we grow, serve our customers and deliver meaningful impact for the communities that rely on us.

A more scalable, integrated approach to waste management is taking shape.

We are advancing our position not only as a leader in thermomechanical treatment, but as a broader “waste major” – a fully integrated partner across the waste lifecycle. As demand for zero waste-to-landfill solutions continues to accelerate, customers are seeking more comprehensive, connected approaches. In response, we have continued to expand our infrastructure and scale with high-demand capabilities such as Centralized Wastewater Treatment (CWT) and our ReKiln Fuels®, while pursuing strategic growth in new markets.

At the same time, we are strengthening how we deliver these solutions. Over the past year, we aligned our teams around a unified, customer outcome-driven strategy. By partnering with industry peers and solutions providers and leveraging our extensive assets and capabilities, we are helping customers rethink how waste is managed, unlocking greater value from materials that were once discarded.

Customers are already seeing the benefits of this transformation through the rollout of the Reworld Customer Gateway. This platform provides a more seamless and transparent experience, replacing fragmented systems with a single, streamlined interface for scheduling, invoicing and reporting, making it easier for customers to manage their operations with confidence.

Our people are at the forefront of our progress.

Their expertise, commitment and focus enable us to adapt and lead in a rapidly evolving landscape. We are investing in the tools, technologies and environment our teams need to succeed, always with safety as our top priority.

This commitment is reflected in how we are applying advanced technologies across our operations. These investments are enhancing efficiency and expanding capabilities. We’re also reducing high-risk tasks and improving safety in our operations — all while delivering measurable cost savings and greater operational visibility.

We are building on this momentum.

By continuing to invest in innovation; use artificial intelligence (AI) technology to improve data visibility, increase safety and drive efficiency in our operations; expand our capabilities and strengthen partnerships, we will deliver greater value to our customers and the communities we serve. Together, we are redefining waste management to advance more circular outcomes and build a smarter, more sustainable future.

Azeez Mohammed
President & CEO



Turning to Sustainability for Opportunity



“Science, safety and community partnerships guide how we solve complex waste challenges and build a more sustainable future.”

At Reworld, sustainability starts with science.

It shapes how we understand risk, measure impact and solve some of the most complex challenges facing the waste sector. We rely on data and research to guide our decisions and quantify the real-world benefits of our solutions.

We are also taking an active role in addressing emerging challenges like PFAS, or “forever chemicals” — one of the most pressing issues in waste management today. Using our infrastructure and technical expertise, we are demonstrating how PFAS-containing materials can be safely managed and destroyed, achieving destruction efficiencies of 99% at scale. We continue to work with regulators, including the U.S. EPA, to help advance proven, science-based approaches.

That same data-driven approach supports our role in decarbonization and a more circular economy. Our Thermomechanical Treatment Facilities (TTF) help avoid landfill methane emissions while recovering value from waste, generating base load renewable energy close to where it’s needed most. Through ReKiln Fuels developed at our Material Processing Facilities (MPF), we enable industries, such as the cement and lime sectors, to reduce their reliance on fossil-based energy sources. Across our facilities, we’ve advanced technologies and processes that save materials like metals from landfills, returning them to our economy. Together, these solutions deliver measurable emissions reductions while advancing more circular outcomes.

Sustainability creates real value in our communities.

Our work goes beyond our facilities. For more than a decade, we have built long-standing partnerships with communities through our engagement efforts – grounded in listening, collaboration and shared priorities.

This value is tangible: we create high-quality local jobs and career opportunities, support local businesses and invest in education and community initiatives that help advance environmental goals.

We also support safe collection and destruction programs, such as pharmaceutical take-back efforts and secure disposal services, that help reduce risks to public health and the environment.

As we grow, we are equally focused on safety, integrity and transparency.

Safety is not a program – it’s how we operate. Our Safety Committees, Life Critical Safety Rules and Stop Work Authority empower employees and contractors to act when something doesn’t look right. This helps us identify risks earlier, respond faster and protect our people, communities and operations.

Our growth is guided by staying ahead of new risks and maintaining strong, consistent performance across our operations. We are strengthening our safety systems through more connected Safety Committees, increased visibility into leading indicators and expanded use of standardized training platforms. We are also sharing lessons learned across the organization and embedding safety into technical training from day one.

We take seriously our commitment to our communities for strong environmental performance. Our facilities continue to operate well within regulatory guidelines and we transparently report on our performance, in many cases daily, to our communities and stakeholders.

Waste challenges are becoming more complex, and we are evolving to meet them.

We are continuing to adapt as creative problem solvers. By applying science, investing in our communities and maintaining a strong focus on safety, we are raising the bar for responsible growth.

At Reworld, sustainability isn’t an add-on – it’s the work we do every day.

Tequila Smith
Executive Vice President, CSO

Advancing as a Leader in Sustainable Waste

Leading Zero Waste-to-Landfill Provider

Our assets include:

32 Thermomechanical Treatment Facilities (TTFs)

45 Material Processing Facilities (MPFs)

14 Transfer Stations

2,600 Vehicles



Top 5 Waste Services Providers

70% of Total TTF Capacity in the U.S.

Assured PFAS Destruction

99% efficiency in destroying forever chemicals contained in materials including waste

Leader in Profiled Waste

Serve over 45 end markets

#1 in independent Alternative Engineered Fuel (AEF) by market share

#3 in Centralized Water Treatment (CWT) by network size

Consistent growth with New MPFs

3 in Operation

2 in Development

TTF Expansion

Structural “topping off” of the \$260M project expanding 515 tons per day capacity in partnership with Pasco County, FL



ReDirect360[®] Zero Waste-to-Landfill Solutions

Divert entire waste streams from landfill disposal and redirect them into sustainable outcomes

ReKiln Fuels[®] Engineered Solutions

Transform unsalvageable materials into low-carbon fuels for the lime and cement industry

ReDRoP[®] Wastewater Solutions

Treat and separate waters from contaminants for reuse, recycling or energy recovery

ReMove[®] Waste Logistics

Handle the removal, transport and final disposal of waste materials – and everything in between



ReAssure[™] PFAS Destruction

Manage all aspects of the safe and certain destruction of PFAS-bearing solid and liquid waste

2025 Sustainability Highlights



We are building a smarter, more sustainable world by helping businesses and communities reimagine what their waste can do. Here are some of the many ways we're doing that every year!

4,180
employees

90+
facilities
worldwide

8,500+
volunteer hours in
our communities

INVESTING IN OUR PEOPLE

- 35% HIGHER COMPENSATION**
On average than the average full-time worker in the U.S.
- 48% BETTER SAFETY**
Than waste industry average based on TRIR
- 30% ROLES FILLED INTERNALLY**
Through Reworld ReGrow Program

REDUCING CLIMATE RISKS

- 39 Million METRIC TONS OF GHGs AVOIDED**
The kind of impact we have is equal to **half of the entire U.S.** utility scale solar installations.
- Or removing **9 million gasoline powered passenger vehicle** from the road for a full year.
- Equivalent to the amount of CO₂ sequestered by **45 million acres of forest**, an area fully covering 8 US states

RENEWING RESOURCE VALUE

19 Million TONS MANAGED SUSTAINABLY

Equivalent to the **weight of 109,000 blue whales**, the largest animal that ever lived!

- 432,000 TONS OF METALS RECOVERED**
Enough to build **5 Golden Gate bridges**
- 250 Million GALLONS OF WASTEWATER RECYCLED OR REUSED**
Equal to **379 Olympic-sized swimming pools**
- 8.7 Million MWh OF ENERGY GENERATED FROM WASTE**
Enough to power nearly **811,000 homes** annually

SUPPORTING OUR COMMUNITIES

- 106,000+ MEALS SERVED TO COMMUNITIES**
- 1,200+ COMMUNITY ENGAGEMENT EVENTS**
- 72,000 AMERICAN FLAGS HONORABLY RETIRED**
- 2,600+ VISITORS TOURED OUR TTFs**



Our People

Inside this Section

- 9 Our Community Focus
- 10 Partnering with the Long Island Community
- 11 Health and Safety – A Core Value
- 12 Investing in Our People
- 13 Employee Growth and Development
- 14 Our Values in Action
- 15 Recognizing Our People

“For 15 years, Reworld has been a valued partner of nourish.NJ demonstrating how corporate citizenship, volunteer engagement and generosity can create meaningful and lasting community impact.”

– Nancy Rudgers, Corporate Engagement Manager
nourish.NJ, Morristown NJ

Reworld in the community with NourishNJ, Corporate Office, Florham Park NJ

Our Community Focus

At Reworld, we strive for meaningful impact.

For more than a decade, our community engagement approach has been guided by transparency and the needs of the communities where we operate.

Our Approach

Our efforts are grounded in three connected priorities: environmental stewardship, local economic resilience and meaningful community engagement. Together, these pillars reflect how we deepen existing relationships, support local needs and contribute to more sustainable communities.

🔍 Did you know?

New TTF development stimulates economic activity.

The construction of a TTF can create nearly 8,000 full time jobs and over \$1B in local income and tax revenue, in addition to over \$30M annually from operations alone.

Environmental Stewardship

We are environmental stewards in our communities. We build trust with our neighbors by leading local cleanups, hosting prescription take back events and delivering exceptional and transparent environmental performances.

50+

Community cleanups

100%

TTFs disclose annual performance



📷 Community electronic waste cleanup in Chester, PA

Economic Resilience

We hire locally, provide highly skilled jobs and career development in communities we serve. We stimulate economic growth through domestic value chain through partnerships with municipalities, businesses and regional groups.

4

Jobs created in the community for every job at a TTF

\$92

Every \$100 in facility economic output supports \$92 in output for the area economy



📷 In the field at the MPF in Gary, IN

Engagement

We engage with local organizations, including NAACP and HBCUs. We support STEM scholarships and Earth Day activities. We create environmental awareness through tours at our TTFs and classroom instruction at local schools.

72,000

Flags honorably retired

106,000

Meals served



📷 The Lee TTF cleaned a roadside of litter for World Cleanup Day! **Rita Crouch** Environmental Area Manager, Fort Myers, FL

Partnering with the Long Island Community

Reworld is a steadfast partner on Long Island, having provided essential waste solutions to its businesses and communities for over 30 years.

Long Island presents a unique waste management challenge: waste cannot move in and out easily, making reliable, local solutions critical to protecting ecosystems and public health.

Through our network of four TTFs, strong community partnerships and time-tested position as a waste sector leader, Reworld provides reliable, year-round waste processing capacity.

Managing 70%
of Long Island's post-recycled MSW

Nearly 2M Tons
MSW diverted from landfills annually

Our solutions avoid 180,000
long-haul trash trailer trips

Avoid 3M MT
of greenhouse gases, CO₂e

200
highly skilled jobs

Local spend* in 2025 \$29M
*within 50 miles of our operations

Generating 970,000 MWh
enough to power 100,000 homes

“Reworld proudly supports Operation SPLASH in protecting the Long Island’s waterways through marine debris removal, expanded cleanup efforts and environmental education that helps preserve local bays, harbors and shorelines for future generations.”

– Rob Weltner
President
Operation SPLASH

Protecting Communities

Secure Firearm Destruction

Reworld supports the NYPD by securely destroying seized firearms, including more than 14,000 illegal guns, at Reworld Hempstead TTF.



Environmental Education

Arts for Recycling

For over 35 years, Reworld has sponsored the Town of Hempstead Earth Day Recycling Poster Contest. This event educates students on the impacts of waste through the creative arts.



Safeguarding Our Waterways

Restore Habitats and Protect Biodiversity

Reworld and local organizations work side by side to restore and preserve ecosystems. Together we eliminate invasive plant species, remove marine debris and restore aquatic oyster habitats.



Health and Safety – A Core Value

There is nothing more important than the health and safety of our employees, our partners, our customers and the communities we serve.

Our approach is built on employee engagement and accountability. Through our **Behavior-Based Safety (BBS) program**, employees are empowered to identify risks proactively, reinforce safe habits and integrate Reworld Values and Behaviors into daily operations.

Safety Committees at each facility further strengthen our safety culture, by promoting prevention, continuous improvement and the sharing of best practices across the organization. By regularly sharing insights and lessons learned, these committees drive consistent safety performance across our operations.

Enhanced reporting, analytics and digital learning platforms support a more structured and scalable approach to training.

From day one, employees receive role-specific training — including safety-focused components within our **Technical Training Program** for new hires — to build competency and support safe operations.

Reworld maintains focus on Life Critical Safety Rules to keep our employees and contractors safe.



48%
Total Recordable Incident Rate
lower than waste industry average

60%
DART rate
lower than waste industry average

2.8x
H&S leadership audits
increase since 2023

2025 Roadmap

We continued our proactive and collaborative approach to engage and empower our employees at all levels and ensure a robust safety management system.

People



Standardize H&S training

Process



Establish H&S layered audit process
Standardize safety management system

Culture



Continue to improve empowerment of Safety Committees

Safety in Action: Each Safety Committee strengthens engagement and reinforces prevention in its own unique way. Teams at Montgomery, MD and Tulsa, OK TTFs have made it a point to make safety best practices more visible, more fun and more memorable to better connect them with daily operations.



Montgomery TTF, Dickerson, MD

Stop Work Authority

Every employee and contractor has both the authority and responsibility to stop work if a condition jeopardizes safety. Increased use of Stop Work reflects a growing culture of empowerment, where employees actively identify and address risks in real time.



Tulsa TTF, Tulsa, OK

Investing in Our People

Our people are at the heart of everything we do.

By investing in fair hiring practices and comprehensive benefits, we attract and retain talented employees while creating a supportive workplace that reflects the communities we serve.

Attracting Talent

Reworld attracts talent through purpose-driven work, competitive benefits, and meaningful growth opportunities. We maintain a strong commitment to local hiring while also recruiting broadly. Our teams connect with diverse candidates through onsite and virtual career events, sharing opportunities in the communities where we operate.

Our STAR Referral Program remains a key talent pipeline, encouraging employee referrals and paying significant referral bonuses.

Setting Up New Hires for Success

We continue to strengthen onboarding and workforce development through our refreshed New Hire Orientation and enhanced onboarding framework. Entry-level programs, including our Facility Operator and Instrument & Electrical Technician programs, provide structured training through classroom instruction and self-paced learning.

Supporting the Whole Person... and Their Families

A comprehensive benefits portfolio helps employees balance mental, physical, social and financial wellbeing for a more resilient workforce.

35%

Higher compensation

Our employees make 35% more than the average full-time worker in the U.S.

22%

2025 Hires referred

by existing employees through the Reworld STAR Referral Program

37

Interns

welcomed from 23 colleges, including HBCUs

\$200K+

Referral bonuses paid

to employees for participating in the Reworld STAR Referral Program

Mental & Emotional

- Employee Assistance Programs
- Virtual therapy
- Personalized wellness coaching

Physical Health

- Access to high-quality healthcare and telemedicine including specialty surgery, chronic issues, GI care, oncology and women's health

Financial Wellbeing

- 401(k) with company match
- HSA, FSA and commuter accounts
- Prescription savings guidance
- Financial and legal support

Work-Life & Family

- Parental leave
- Dependent care support
- Virtual and onsite health & benefits fairs
- Benefits education for families



Health Fair at the Essex TTF, Newark, NJ



Attendees at Retire Well: Strategies to Build Your Financial Future

Employee Growth and Development

Ongoing professional development and engagement programs help employees grow their careers, become stronger leaders and create an inclusive workplace where people can learn, connect and thrive.

Fostering a Strong Company Culture

Reworld continues to invest in building a culture rooted in respect, inclusion and collaboration. We focus on strengthening team dynamics, navigating conflict and leveraging diverse perspectives to create a more inclusive and effective workplace.

Building Internal Networks

Our Employee Resource Groups (ERGs) and Affinity Groups provide safe spaces for employees to connect, share experiences and grow together.

Developing Our Workforce

As a highly specialized industry, our success depends on attracting, developing and retaining a skilled workforce. We provide Technical Training Programs such as Combustion Training and Operator Bootcamp. Our competency management system documents our employee training journey. Developing our leaders for tomorrow is a business imperative.

Career Growth

Through our ReGrow program, employees are encouraged to explore opportunities across the organization, expand skills and pursue career advancement.

Continuous Learning

We provide accessible learning opportunities that support ongoing development and workforce readiness.

- **Reworld Academy** serves as a centralized hub for learning and development.
- **LinkedIn Learning** provides on-demand access to professional and technical skills training

Leadership Development

We continue to invest in leadership development at all levels of the organization.

- **First-level Leader** focuses on foundational leadership and technical skills.
- **Mid-level Leader** builds strategic leadership capabilities and business acumen.

30%

Roles filled internally through Reworld ReGrow

1,200+

Employees reached through 100+ sessions of Creating a Respectful Workplace Program

100

Leaders developed through Reworld leadership training programs

400+

Employee advancements to their next competency level



Bristol TTF Operator Bootcamp, Bristol, CT



Haverhill TTF Operator Bootcamp, Haverhill, MA

Our Values in Action

Our core values of creating a safe and inclusive workplace, delivering results with trust and integrity and continually building breakthrough capabilities. Our values guide how we show up every day for ourselves, each other and our customers.

Inspiration in Focus!

We challenged employees across the company to show us through photos what inspires them the most. Their submissions are featured here and throughout the report.



Leopard in Zambia

Alan Bradley Howe
Vice President, Deputy General Counsel, Florham Park, NJ



Fijian Fire Dancing

Amy Lynn Magard
Talent Acquisition Lead Works From Home, OH



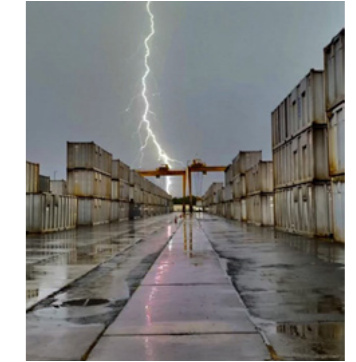
Hiding in Plain Sight

Eric Wentz, Environmental Specialist, Camden, NJ and Fairless Hills, PA



Sunflower Bundles

Aurora Skurtan
Manager, HR Operations Works From Home, CA



D.O.T. Lot Lightning

Michael Bynaker
Lead Maintenance Mechanic, Dickerson, MD

Employee Spotlight

Donavan has built his Reworld career by taking on new challenges, following his curiosity and continuing to grow as a leader.

Before joining the company, he began his career in nuclear power with the U.S. Navy, serving in South Carolina, New York and Hawaii while gaining experience in nuclear power operations, steam and electrical power generation systems. After several years in the Navy, including time aboard a submarine and later teaching on training ships, he looked to continue working in power generation, which ultimately led him to the waste industry and Reworld.

Donavan started at the Indianapolis TTF as a shift supervisor, where he balanced real-time operational decision-making with planned projects, system commissioning, repairs and facility improvements. Along the way, he also completed his MBA, further strengthening the leadership he brings to his role.

Donavan participated in the First-level Leader program to Creating a Respectful Workplace and more recently the Mid-level Leader program. This was especially valuable in broadening his perspective beyond one facility or role. It connected him with peers across the company, exposed him to shared challenges across sites and helped him link day-to-day operations to broader business outcomes.

Donavan leveraged the ReGrow program aiding his most recent promotion as Operations Manager at the Montgomery TTF. Today his work focuses on strengthening operational expertise, building team capability and driving continual improvement.

He credits much of his growth to the people around him. “You can be successful on your own, but having good people in your corner is what helps you really excel.”

Donavan Grimes
Operations Manager
Montgomery TTF, Dickerson, MD



Recognizing Our People



HRO Today's Talent Acquisition Summit recognized Vineet Wadhwa, Senior Director Talent Acquisition as 2025 Talent Acquisition Leader of Distinction in San Diego, California for leadership, innovation and excellence in driving high-impact talent strategies.



Qlik recognized Reworld as a Innovation AI Finalist for a multi-year record of advancing data and analytics across business and for our customers. The award was accepted by Charles Link, Senior Director Data Analytics.

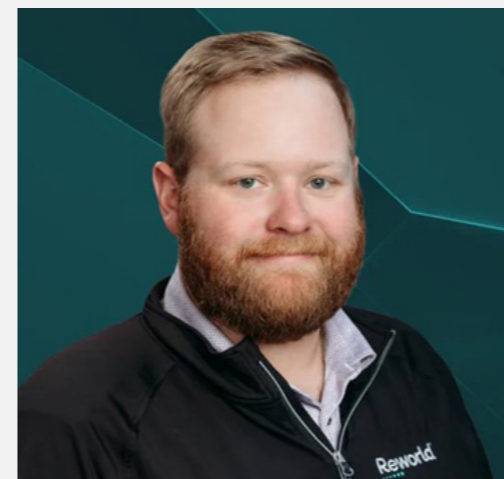
Virginia Water Environment Association recognized the Reworld Alexandria TTF for the second consecutive year for 100% compliance with wastewater discharge permit requirements. The facility was also recognized for over five consecutive years of compliance and for reusing wastewater in facility operations.



Heenan Pennsylvania Recycling Markets Development Award presented to Reworld and Goodwill Keystone for a successful partnership expanding access to free electronic waste recycling. The program serves 22 counties across Central and Southeastern Pennsylvania.



Trailblazer Award by Student Governmental Affairs Program (SGAP) Leaders honored Reworld for providing underserved students with experiential learning opportunities in STEM, sustainability and social impact.



Reworld experts were awarded 40 Under 40 by Waste 360. Two Reworld Solutions Group leaders won this title for two consecutive years, Brett Stevens (left), Senior Director in 2025 and Derek Waddle (right), Director in 2026.





Rainbow at Vernal Fall
Yosemite National Park,
California

Timothy Maguire,
Sustainability Specialist,
Florham Park, NJ



1.6M

tons recycled and
reused in 2025

71% Increase
from 2020

Be Waste Ready.

Inside this Section

- 17 Our Role
- 18 The Waste Hierarchy – Our Guide
- 19 Our Circular Solutions
- 20 Reimagining Circularity for Our Customers
- 21 Infrastructure and Services
- 22 Building the Collaborative Waste Economy
- 23 Driving Circularity for Industrial Hubs
- 24 Decarbonizing Industrial Sectors
- 25 Sustainability Starts Within

Our Role

Waste is not an endpoint – it’s a new beginning.

At Reworld, our business and our purpose go hand in hand: building the infrastructure, partnerships and systems that transform waste and its risks into a resource for sustainable opportunities.

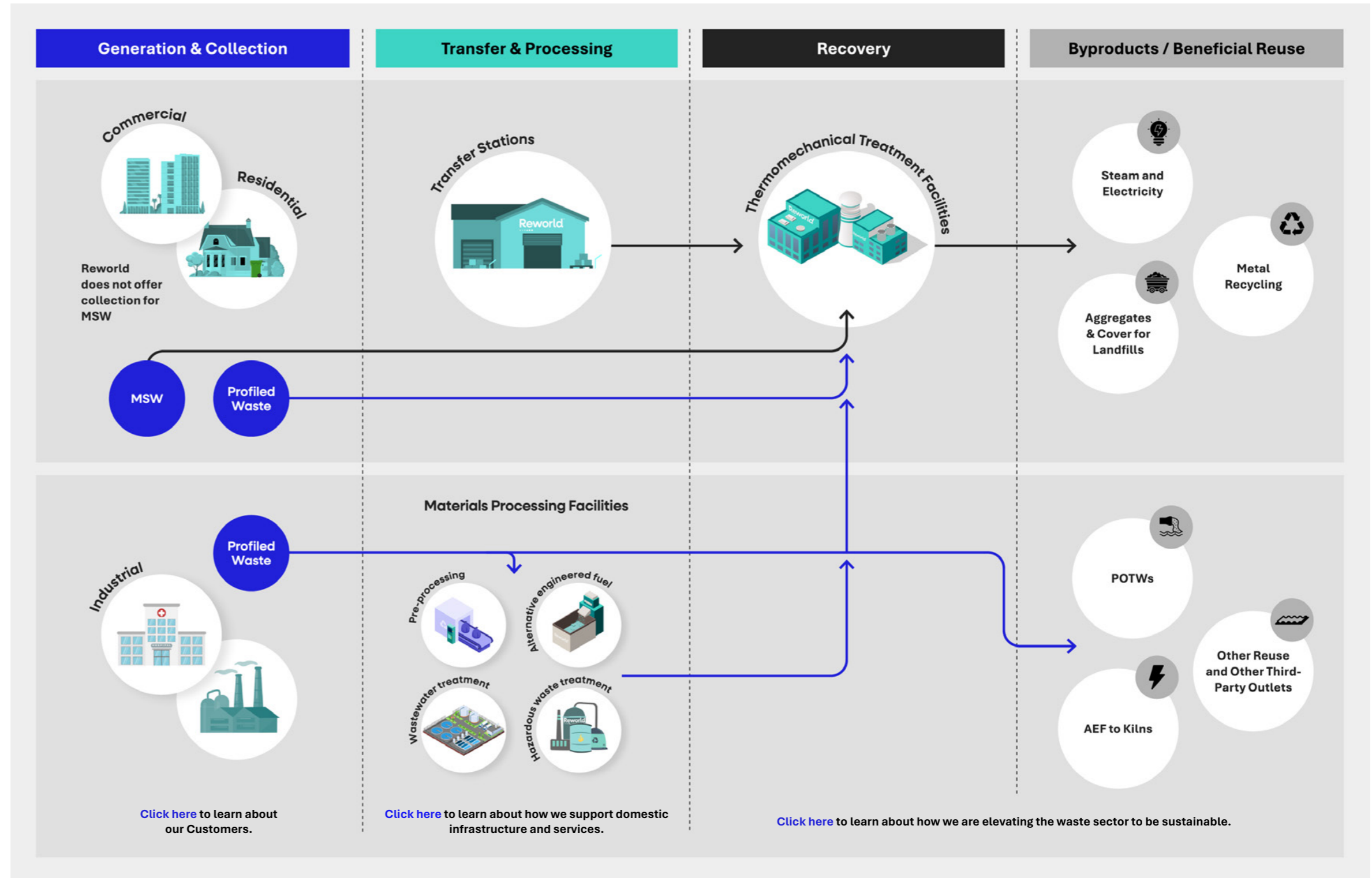
The Waste Challenge

By 2050, global waste generation is projected to double, reaching 3.9 billion metric tons. Without meaningful intervention, the cost of inaction of unmanaged waste, such as rising system costs, environmental damage and public health impacts, could exceed \$640 billion annually worldwide.

The United States generates more waste per capita than any other nation. Each year, more than 290 million tons of municipal solid waste and 250 million metric tons of commercial and industrial waste are produced, with the vast majority still flowing to more than 2,500 landfills across the country.

Our Strategy

Our diversified, end-to-end asset base positions Reworld as the partner capable of managing the full waste journey, from transfer through materials recovery, energy recovery, treatment and beneficial reuse. We serve municipal, commercial and industrial customers across all waste types and sectors, routing each waste stream to the most effective option based on customer needs, whether recycled, recovered as alternative fuel or converted into renewable energy.



The Waste Hierarchy – Our Guide

Up the Waste Hierarchy

The U.S. EPA, European Union, the United Nations Environmental Programme and many states rely on the waste hierarchy to guide end-of-life management decisions. When combined with lifecycle thinking, it helps reduce the overall environmental impacts of waste management.

Eliminating waste is the first principle of the circular economy. We help our communities and customers move up the waste hierarchy – shifting materials away from landfills towards reuse, recycling and energy recovery and ultimately working to prevent waste before it is created.

In 2021, following our acquisition by EQT, we introduced a groundbreaking financial structure as part of the first-ever leveraged buyout in the U.S. to incorporate sustainability-linked financing (SLF). This framework established clear, financially-linked targets tied to advancing waste up the hierarchy. In 2025, we met those goals, reinforcing our commitment to accountability and measurable progress.

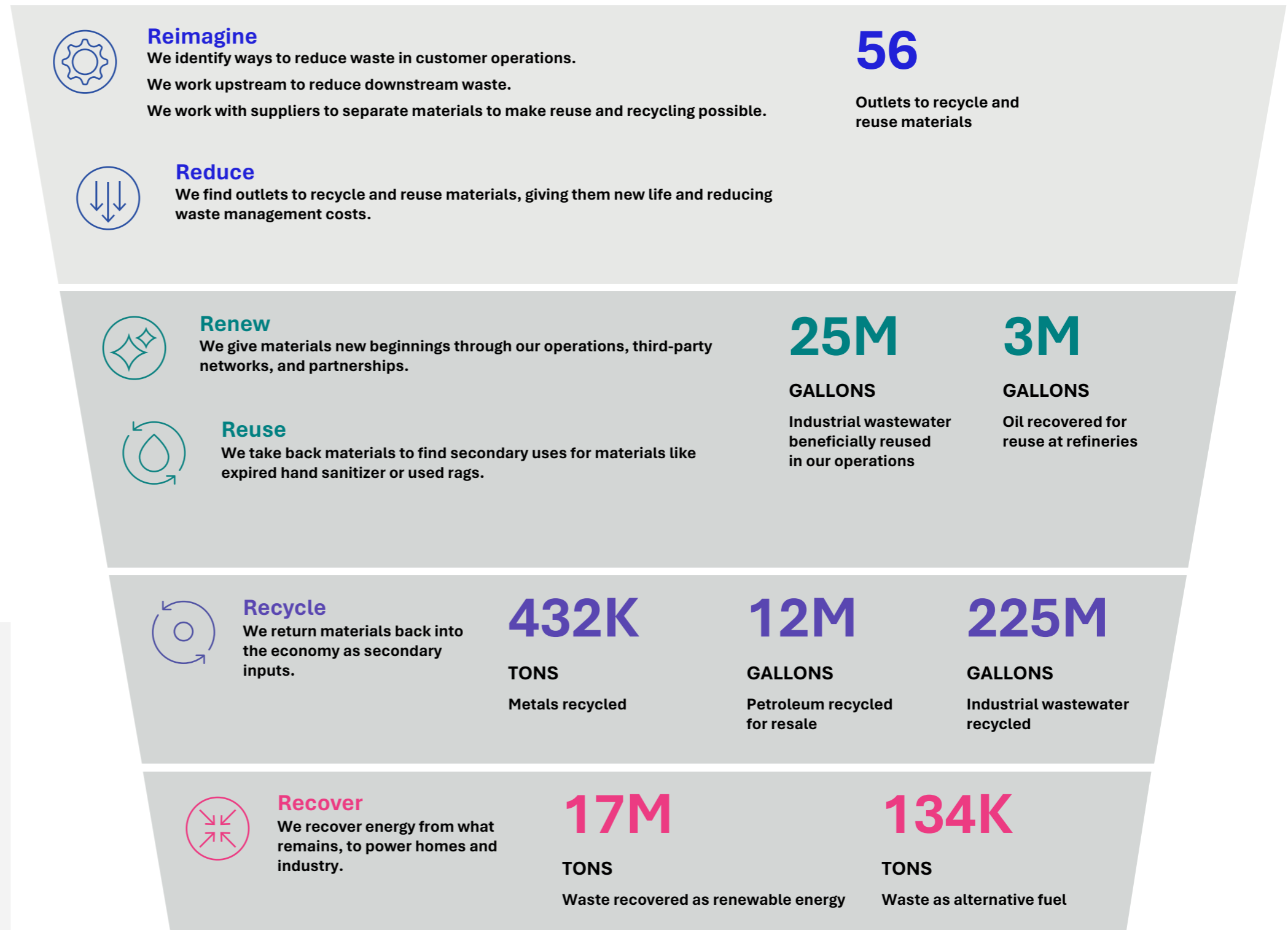
Case Study

Lifecycle Thinking: Empty Pill Bottles

Reworld was asked to provide solutions to manage empty HDPE pill bottles generated during pill repackaging based on GHG impact.

- Traditional recycling of plastic or
- Alternative fuel, lower on the hierarchy, providing secure destruction of pill residue and labels, brand protection and energy recovery at a cement kiln.

The customer chose the alternative fuel option, keeping millions of plastic pill bottles out of landfills.

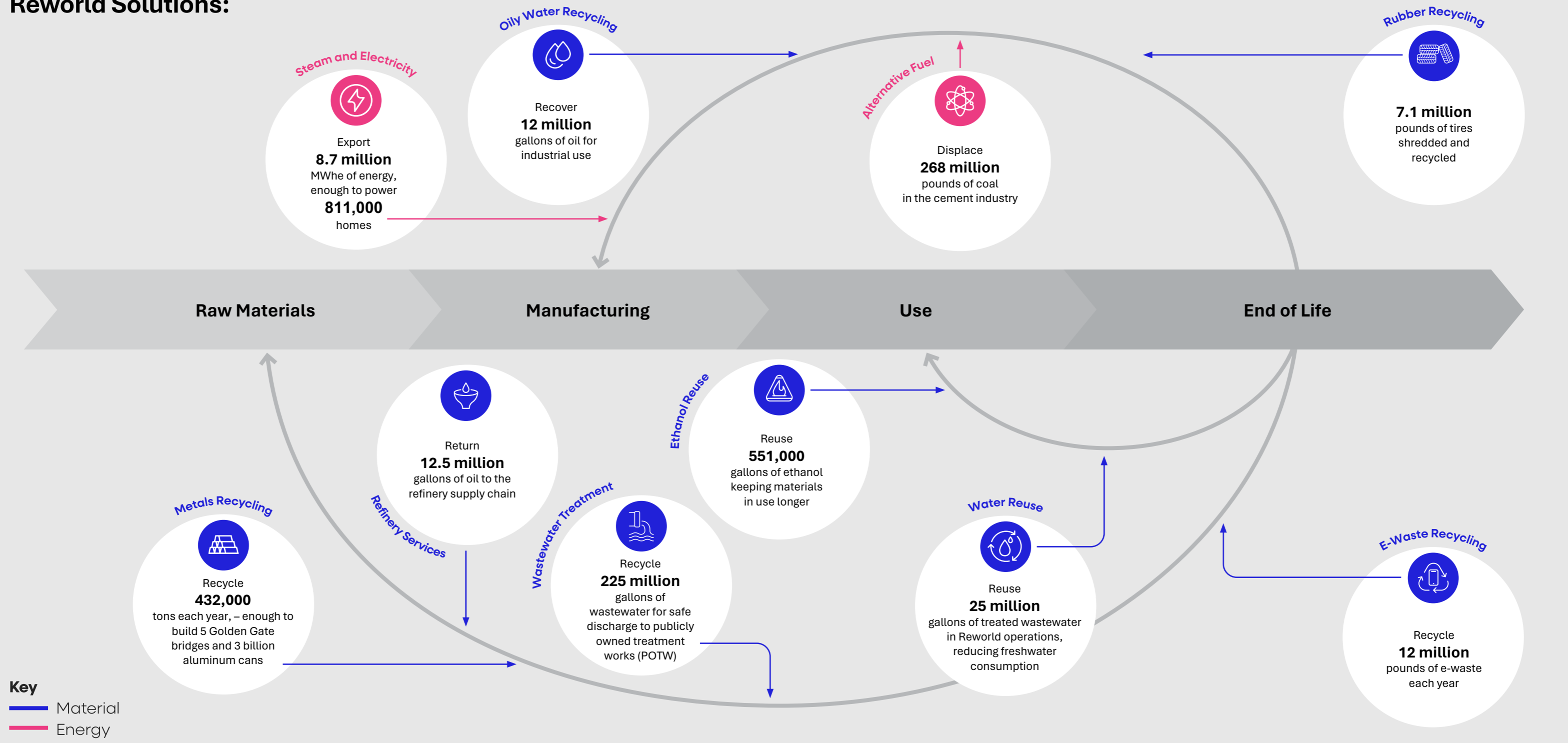


Our Circular Solutions

Our solutions put materials and energy back into the economy reimagining waste materials as feedstock, materials and energy. Through Reworld partnerships, businesses and communities contribute to the creation of their local circular economy.

Circularity is a framework of design, production, consumption, reuse and end-of-life management where materials at the end of their life are returned to useful production at their highest and best use, with minimal environmental impact. Materials which can no longer be used can be repurposed as energy to power a more circular economy.

Reworld Solutions:



Reimagining Circularity for Our Customers

Reworld transforms complex waste challenges into measurable sustainable outcomes.

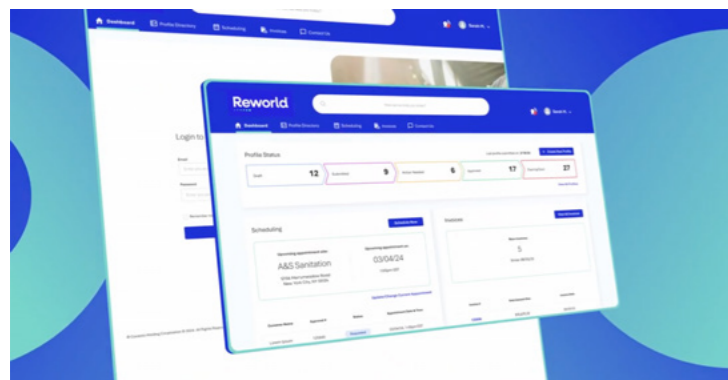
The Challenge

Businesses of every size face mounting pressure to reduce the environmental impact of their waste. Regulators, investors and consumers are demanding accountability and transparency across the full lifecycle of operations. However, waste remains an under-leveraged sustainability opportunity. The question is no longer whether to act but whether businesses have the right partner to help them achieve their sustainability goals.

Reworld Customer Gateway – Lean Intelligence for Every Customer

Our flagship platform gives every profiled waste customer real-time access to their complete waste profile, eliminating the blind spots that undermine sustainability reporting. Key capabilities are provided in one place, including:

- Real-time profiling
- Self-service scheduling
- Invoice review and account management



Our Differentiated Answer

At Reworld, we apply lifecycle thinking and the Waste Hierarchy to guide our approach, converting what our customers discard into quantified and reportable sustainability outcomes — regardless of the operational footprint, sector or scale.

What sets us apart is not just what we solve, but how we grow our business relationships. Reworld evolves alongside our customers' sustainability ambitions. Whether managing a single waste stream or an entire portfolio, we help meet our customers' needs by deploying a full suite of solutions tailored to each customer.

Tailored Total Waste Management

Our total waste management model aligns directly with our customers' sustainability objectives. When our customers win on sustainability, we win as well. By partnering with us, they get:

- A single integrated partner across all waste streams
- Revenue-share recycling incentives
- Verified, compliant processing for every load
- Scalable support as operations and needs grow

Results that speak

4,000+

REWORD CUSTOMERS

divert waste away from landfills

2.8M

TONS

managed as Profiled Materials



Innovation Spotlight

Reworld and Kimberly-Clark

The Reworld and Kimberly-Clark partnership with Huggies® Brand and Bright Horizons was launched in 2024 and has continued to grow with two additional New England locations.

By diverting 80,000 pounds of used diaper waste last year, equivalent to 8 full school buses, we are scaling our impact and proving our ability to solve even the toughest, most complex waste streams.

Our Sector Reach



Infrastructure and Services

Municipalities and government agencies rely on Reworld for critical waste management and water treatment infrastructure that protects public health and the environment.

Our thermomechanical technology manages high-security and sensitive waste and reliably meeting secure destruction requirements, while keeping communities safe.

We partner with government agencies including U.S. Drug Enforcement Administration (DEA), U.S. Customs and Border Protection and the U.S. Department of Agriculture (USDA), as well as local law enforcement. Together we meet strict standards for the secure destruction of illegal drugs, firearms, foreign pests and pathogens, expired pharmaceuticals, recovered opioids and other forms of contraband.

During extreme weather, our TTFs remain operational continuing to process waste, supporting cleanup and recovery efforts and helping to protect public health.

In addition to Reworld-owned TTFs, we operate local government-owned TTFs to process municipal solid waste. We also run programs that keep household hazardous waste out of communities and the environment, directing it towards material-specific recycling programs.

Through the safe and reliable operation of TTFs, managed by our experienced, highly skilled teams, we consistently operate well below permitted air emission limits, contributing minimally to the local air sheds while providing a dependable and sustainable solution for managing waste remaining after recycling at scale.



Scan to access Facility Performance Sheets.

Our ISO-certified electronics collection and recycling operations include free programs preventing toxic releases and conserve critical metals. Our Centralized Wastewater Treatment (CWT) operations complement local infrastructure by pre-treating industrial wastewater prior to releasing to Publicly Owned Treatment Works (POTW).

152

AGENCIES

served in federal, state and local government

13

FACILITIES

operated on behalf of local government owners

20,000

FIREARMS

safely destroyed for local law enforcement

15

POTWs

receive pre-treated wastewater from Reworld CWTs

1.4M

POUNDS

high security waste streams safely destroyed for government agencies (APHIS, contraband, documents, drugs)

27

SCHOOLS & UNIVERSITIES

contract with Reworld for waste management services including lab packs

Did you know?

Biosecurity is achieved through assured destruction.

APHIS wastes are high-risk biological materials regulated by the USDA and threatens U.S. food supply if not properly destroyed. These include foreign pests, pathogens and agricultural byproducts. Reworld TTFs provide secure, high-temperature destruction which protects U.S. agriculture, public health and border biosecurity.



Partnership

DEA Partnership

International Programs

Through programs in Costa Rica and Panama, Reworld securely destroyed over 100 tons of waste from DEA laboratories in 2025.

National Drug Take Back Efforts

Reworld is a proud supporter of the U.S. DEA National Prescription Drug Take Back Day. Through nationwide collection programs and local partnerships, Reworld supported the safe disposal of nearly 1,500 tons of materials in 2025 for the public. These efforts help prevent misuse, protect communities and ensure pharmaceuticals are managed responsibly.



Reworld partnered with the Loudoun County Sheriff's Office in Virginia **David Cali**, Senior Director of Security and DEA Compliance

Building the Collaborative Waste Economy

We work alongside waste-sector partners to deliver sustainable waste solutions that expand what’s possible for businesses.

Finding the best use for waste requires coordination and cooperation. No single organization can achieve this alone.

As industry experts, Reworld has built transformative partnerships across nearly every sector. By combining our capabilities with specialist partners, we address persistent challenges in the waste industry and in the industry of our customers, delivering outcomes that divert waste from landfill at scale. Together, we are advancing sustainability far beyond what any business could accomplish alone.

Network at a Glance:

830
Partnerships
in the waste sector

27
Years
Longest waste solutions partnership since 1999



Did you know?

Our strategic partnerships with industry peers accelerate sustainability across Long Island’s waste sector.

From enabling a local consumer product manufacturer to reuse collapsible totes for bulk product transfers to providing zero waste-to-landfill solutions to more than 30 industry peers, Reworld manages over 20,000 tons of waste annually while advancing sustainability outcomes.

Our transportation partnerships are a critical part of this model, enabling the efficient collection and movement of waste generated on Long Island to our network of local facilities. We do so while maintaining service continuity and reliability for businesses operating in one of the most logistically constrained markets in the country.

Case Studies

Converting Recycling Residues to Energy for Cement Kilns

Contaminated residues from material recovery facilities (MRFs) that process recyclables (including non-recyclable plastics) are blended, shredded and processed into our alternative engineered fuel product, ReKiln Fuel, to power cement and lime kilns. This helps reduce GHG emissions and offset fossil fuel use. Without this pathway, these residues and non-recyclable plastics would otherwise remain in landfills.

Turning Landfill Leachate into a Resource

Landfill leachate, generated when precipitation percolating through waste, often requires costly treatment and management. At our SeMass facility, we use this leachate for quenching ash reaming after our energy recovery process, reducing freshwater use at the facility and mitigating a liability for the landfill.

Innovation Spotlight

Repurposing Ash

Nonhazardous ash residue generated at our TTFs can be used to stabilize liquids and bio-solids prior to landfilling, turning a residual material byproduct into a process reagent for landfill operators.

Driving Circularity for Industrial Hubs

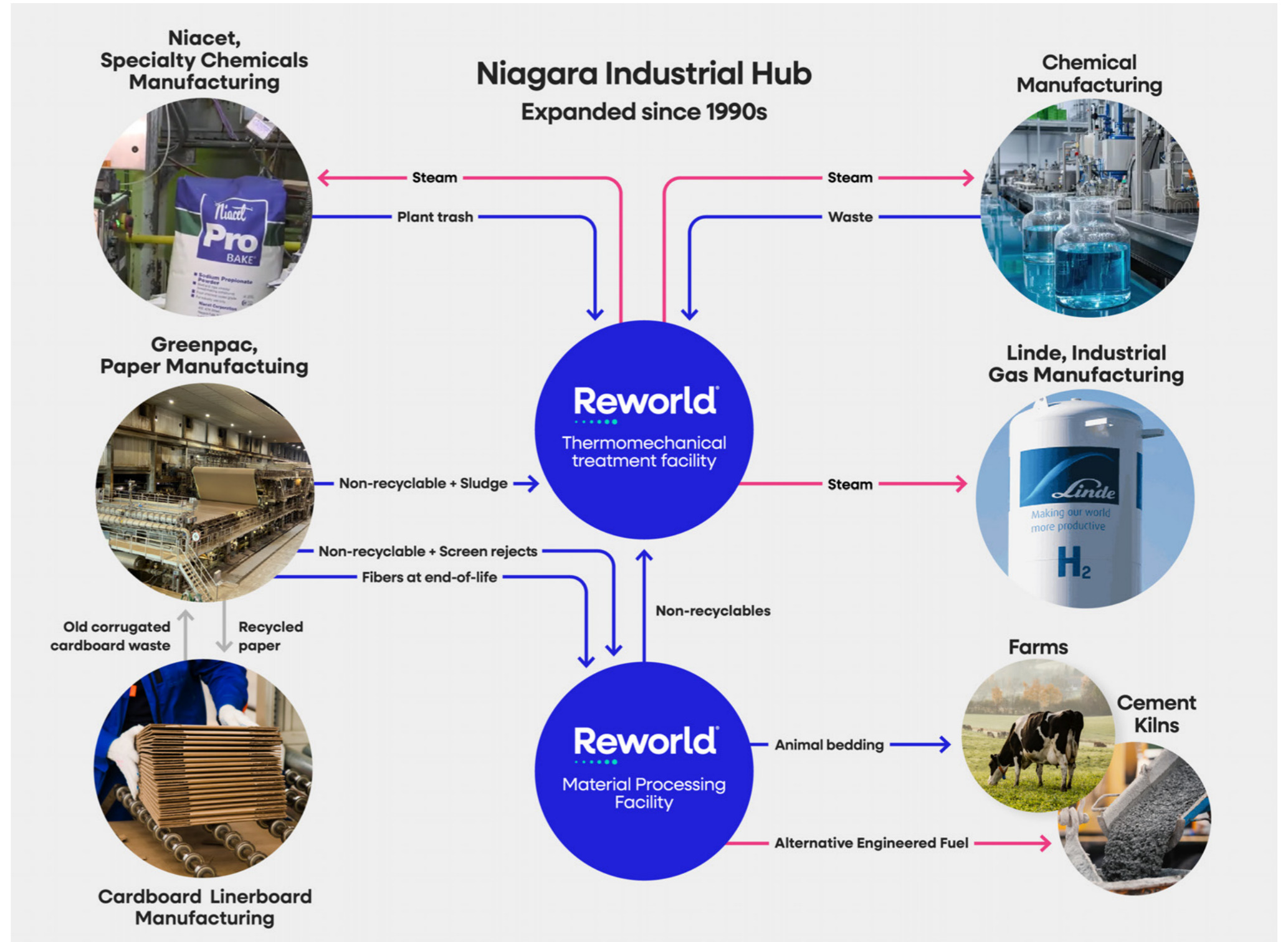
In Niagara Falls, our TTFs and MPFs serve as the industrial corridor's shared circular engine.

Industrial corridors can power their local circular economy with their waste. Process waste and non-recyclable byproducts from one operation can help power another.

Reworld and its industrial partners in Niagara Falls simply and effectively treat one manufacturer's waste as another's fuel or raw material.

Industrial waste from chemical manufacturing for tires, paper mill and food chemical production is converted into high-purity steam and returned to those same plants and to an industrial gas manufacturer as decarbonized thermal energy. Non-recyclables become alternative fuel for cement kilns and paper fibers that cannot be recycled any longer substitute raw materials in animal bedding. Zero waste is sent to landfill by design.

What once left these plants as a liability now powers the region.



Decarbonizing Industrial Sectors

Through technology, partnerships and innovative thinking, we help decarbonize the essential industries that communities and economies rely on every day.

Heavy industries, such as the steel, cement and chemical sectors, contribute almost 40% of global CO₂ emissions.

These industries are among the hardest to decarbonize due to their high demands for energy, direct process emissions of GHGs and high capital costs for facilities and retrofits.



Did you know?

Lifecycle assessments (LCAs) are used to quantify environmental impacts.

LCAs help us analyze environmental impacts of products, services and alternatives.

Focusing on end-of-life treatment for waste, we quantified the greenhouse gas benefits of landfill diversion to TTF due to landfill methane avoidance, fossil fuel replacement and metal recycling.

Cement & Construction

Our ReKiln Fuels offering is helping decarbonize the cement and lime industry by replacing fossil fuels with alternative engineered fuel.

Aggregates manufactured from our combustion ash have been successfully demonstrated at a commercial scale. Our non-hazardous ash has also been beneficially used as landfill cover, road sub-base material and as a reagent for solidification.

293,000

METRIC TONS

of GHGs avoided in 2025

Metals & Mining

Our TTFs recover several hundred thousand tons of ferrous and non-ferrous metal every year.

Rather than being buried in a landfill forever, these valuable, secondary metal resources are recycled and reintroduced into the market, boosting the domestic supply. Research work with academic and federal lab partners has demonstrated the potential for critical and precious metal recovery.

974,000

METRIC TONS

of GHGs avoided in 2025

Energy

From a lifecycle perspective, our TTFs are the only major source of net negative carbon energy, when the benefits of avoided landfill methane are considered. In fact, they are 10x more effective at reducing GHG emissions than wind or solar when taking an economy-wide perspective.

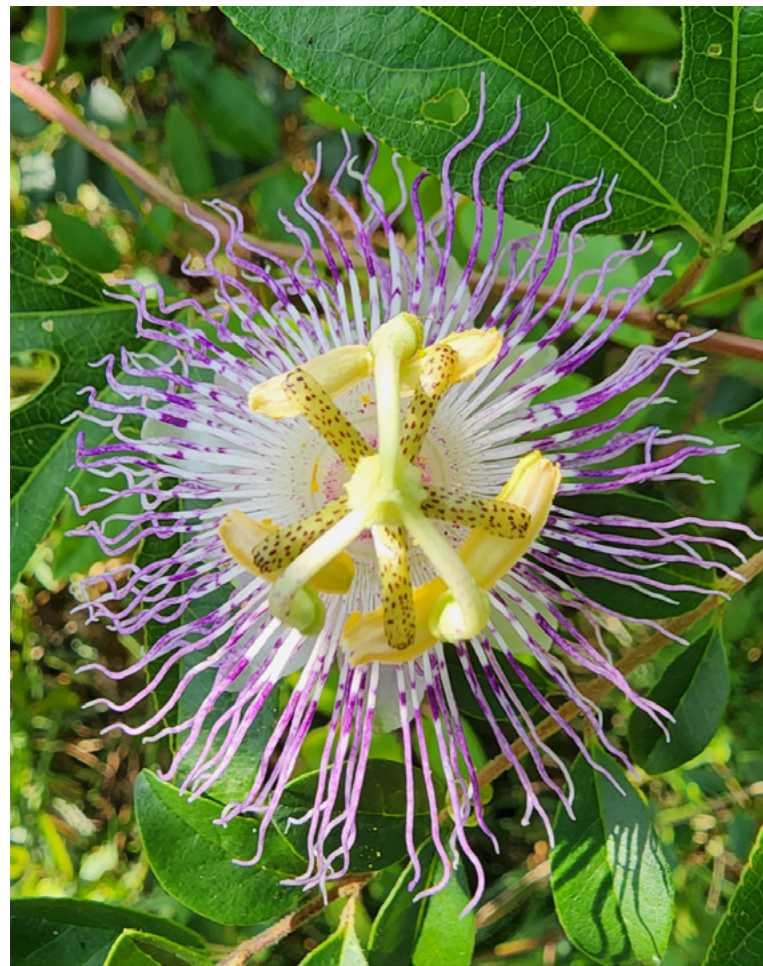
38M

METRIC TONS

of GHGs avoided in 2025

Sustainability Starts Within

Our sustainable solutions are embedded in our operations, helping deliver measurable benefits and lowered impacts from waste.



Beauty in Unexpected Places, Megan Raines,
Vice President, Health and Safety, Florham Park, NJ

Governance & Transparency

Our Chief Sustainability Officer, with direct responsibility for environmental, community and government affairs, reports to our CEO. Our Board Sustainability & Environmental Justice Committee provides overall oversight.

We provide annual updates on our performance and the majority of our TTFs provide daily updates on our emissions.

Click here to access our [Facility Performance](#).



Sustainability-Linked Financing

In 2025, we successfully met our targets under our Sustainability-Linked Financing (SLF), the first-ever use of such financing for a leveraged buyout in the U.S., as part of our 2021 acquisition by EQT. The SLF directly linked sustainability goals around landfill diversion to financial performance.

Click here to view our independent verification of us meeting our [SLF KPIs Targets](#).



Life-Cycle Thinking Approach

We use lifecycle thinking to guide decisions, support customers' performance goals and advocate for public policies that benefit communities and the environment.

Our messaging on our GHG benefits is based on a thorough LCA verified against ISO lifecycle and carbon footprint standards.

Click here to download our [independently verified LCA for Reworld TTFs avoided GHG impact](#).



Sustainability Investment

We have submitted permit applications for a \$60M investment in our Camden TTF. Already operating well below permitted limits, the improvements are expected to reduce certain emissions by up to 90%. The project includes a transformative community benefits agreement.

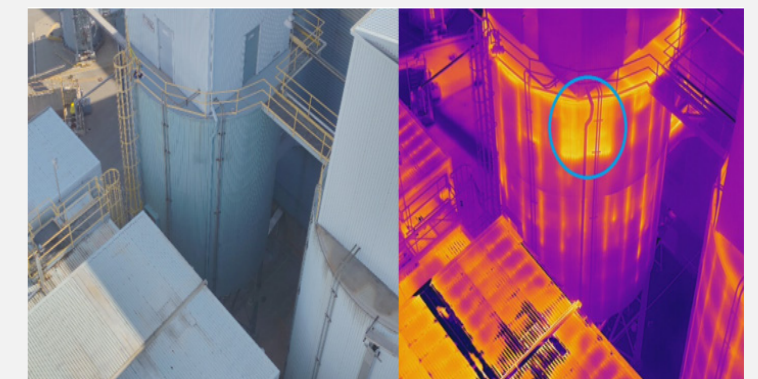
Click here to stay updated for the project at [Camden TTF](#).



Continuous Improvement

Working with CarbonXT, we added a renewable forest-based Powdered Activated Carbon (PAC) to our supply chain. **Since 2023, we have reduced reliance on coal-based PAC by 10 million pounds at 17 TTFs.**

We leverage drone and robotic technologies to enhance safety and equipment reliability by enabling inspection of confined and hard-to-reach areas. Advanced imaging and testing capabilities have supported early identification of potential issues, helping to reduce risk and improve maintenance effectiveness.



Side by side aerial picture of visual and infrared images of a hot spot of potential lack of insulation or corrosion

Our Solutions and Impact

Inside this Section

- 27 ReDirect360
- 28 ReAssure PFAS Destruction
- 29 Our Carbon-Negative Solutions
- 30 Thermomechanical Treatment
- 31 ReKiln Fuels
- 32 ReDrop
- 33 ReMove and Industrial Services

39M
metric tons of GHGs avoided in 2025

1.2B metric tons avoided since 1986



📷 *“Every little step matters. This baby turtle’s journey to the ocean depends on clean beaches and healthy seas. Our choices from reducing plastic to protecting coastal habitats, help make sure more of them reach the water safely.”*
Kimberly Boucher, Senior Controlled Substance Coordinator, Quebec, Canada

ReDirect360



The Challenge

In the United States, more than two-thirds of waste is landfilled, resulting in lost opportunities for material and energy recovery and long-term environmental impacts. After recycling, remaining waste is directed to thermomechanical treatment or landfill.

Once landfilled, materials are no longer recoverable, and can create long-term environmental risk, including potential leakage, contamination and emissions.

At the same time, pressure on industrial waste management is increasing. Extended Producer Responsibility regulation, climate disclosure requirements, Scope 3 greenhouse gas reporting, PFAS concerns and corporate net-zero commitments are pushing companies to better measure and reduce the lifecycle impacts of their waste. As a result, diversion from landfill has shifted from an aspirational goal to a business imperative.

Our Solutions

Through **ReDirect360**, customers can advance sustainable waste management goals with access to a scalable North American network of over 90 facilities, including Transfer Stations, Material Processing Facilities (MPFs) and Thermomechanical Treatment Facilities (TTFs).

Across this network, we recover value from waste streams by returning materials such as metals, water, packaging, oils, solvents and organics back to the economy. Non-recyclable and high-risk materials are safely destroyed and converted into energy through TTF processing or **ReKiln Fuels**, helping reduce landfill dependence.

Transportation and logistics are a critical parts of the system. Our **ReMove** solution provides a specialized fleet and field services to safely collect, transport and manage industrial waste streams directly from customer sites.

Our Impact

Every year, we reimagine waste for thousands of customers with our **ReDirect360** offering.

19M

TONS

of waste diverted from landfill

1.6M

TONS

of waste recycled/reused

98%

INBOUND WASTE

diverted from landfill

8.7M

MWhe

energy from waste

3M

POUNDS

of post-consumer pharmaceutical waste safely destroyed

→ 19 million pill bottles

12M

POUNDS

of e-waste recycled

→ 4 million laptops

39M

METRIC TONS

of GHGs avoided

477,000

METRIC TONS

of methane avoided

Case Studies

This zero waste-to-landfill solution diverts waste from landfills, reduces environmental liabilities and drives resource synergy through a single, streamlined service.

Depackaging and Food Recovery

Off-specification and expired food products are depackaged by specialist partners where food is diverted to composting or anaerobic digestion while packaging enters the recycling stream, ensuring nothing from either stream goes to landfill.

Rebox – Cardboard Given a Second Life

Cardboard collected by Reworld is sent to Rebox, where good-condition boxes are repurposed and sold directly to local independent retailers. This keeps material in use longer and supports small businesses in the community.

Our approach to help customers meet zero waste-to-landfill goals:



ReAssure PFAS Destruction



The Challenge

PFAS are used in many consumer, commercial and industrial products. When these products reach end of life, PFAS enter the waste stream. Addressing these materials requires treatment solutions capable of reducing their exposure risk.

Landfills only store the PFAS they receive, leaving it for future generations. Over time, landfills emit PFAS through leachate and landfill gas, creating ongoing management and environmental concerns.

The Solution

Reworld provides a proven pathway for destroying PFAS-containing materials across municipal, commercial and industrial waste streams through its network of TTFs. This approach has been evaluated through extensive testing, including with the U.S. EPA and state regulatory agencies.

By integrating thermomechanical treatment, material processing, wastewater treatment and specialized logistics, Reworld delivers scalable solution for secure destruction of PFAS-containing waste. This integrated approach helps customers reduce the long-term environmental and regulatory risks associated with these persistent compounds.

Proven Performance

Testing at Reworld TTFs in Pennsylvania demonstrated effective control of PFAS emissions, with measured levels below available ambient air quality guidelines.

Five Reworld TTFs participated in a voluntary testing program with the Pennsylvania Department of Environmental Protection (PADEP). USEPA’s Other Test Method 45 (OTM-45), was used to evaluate PFAS compounds in facility air emissions.

Results from stack testing found targeted PFAS compounds to be either non-detectable or present at very low levels when compared to state ambient air quality guidelines - even before accounting for atmospheric dispersion. PFAS concentrations ash remaining after treatment were also found to be low or non-detectable.

TTFs operational and destruction capability to mineralize PFAS:

>1,100° C **99%**
 Operating temperature, demonstrated to destroy PFAS PFAS destruction













What are PFAS?

PFAS, also known as Per- & Polyfluoroalkyl Substances, are a class of man-made chemicals that were manufactured starting in the 1940s and continue to be used in various industrial processes and consumer products.

They are **used in everyday products** due to their durability, resistance (chemical, water and oil) and thermal stability.

They are **extremely resistant to degradation** due to their strong carbon-fluorine bonds and can persist in the environment for long periods of time, leading many to refer to them as “Forever Chemicals”.

Human exposure is through ingestion, particularly via food and drinking water. Direct contact exposure can also occur through the use of PFAS-treated fabrics and stain and water resistant coatings in our homes.

 Water Resistant Clothing	 Paints and Sealants	 Cosmetics and Personal Care	 Food Wrappers and Packaging	 Firefighting Foams	 Biosolid Materials
 Herbicides and Pesticides	 Polishing and Cleaning Agents	 Non-Stick Cookware	 Photography Materials	 Stain-Resistant Furniture	 Leachate, Rinsate Industrial Sludges

Our Carbon-Negative Solutions

The Greenhouse Gas Challenge

The waste sector plays an important role in reducing greenhouse gas (GHG) emissions.

Today, landfills are the third-largest source of anthropogenic (human-made) methane in the U.S. Methane is over 80 times more potent than carbon dioxide (CO₂) at trapping heat in the atmosphere over a 20-year period. Reducing methane emissions is an effective near-term climate action.

With over two-thirds of U.S. waste currently landfilled, diverting waste from landfill represents a significant opportunity to reduce emissions. Recent measurements have shown actual landfill emissions to be 2-3 times higher than previous estimates – further underscoring the importance of diversion greater.

Leading the Charge to a Carbon-Negative Future

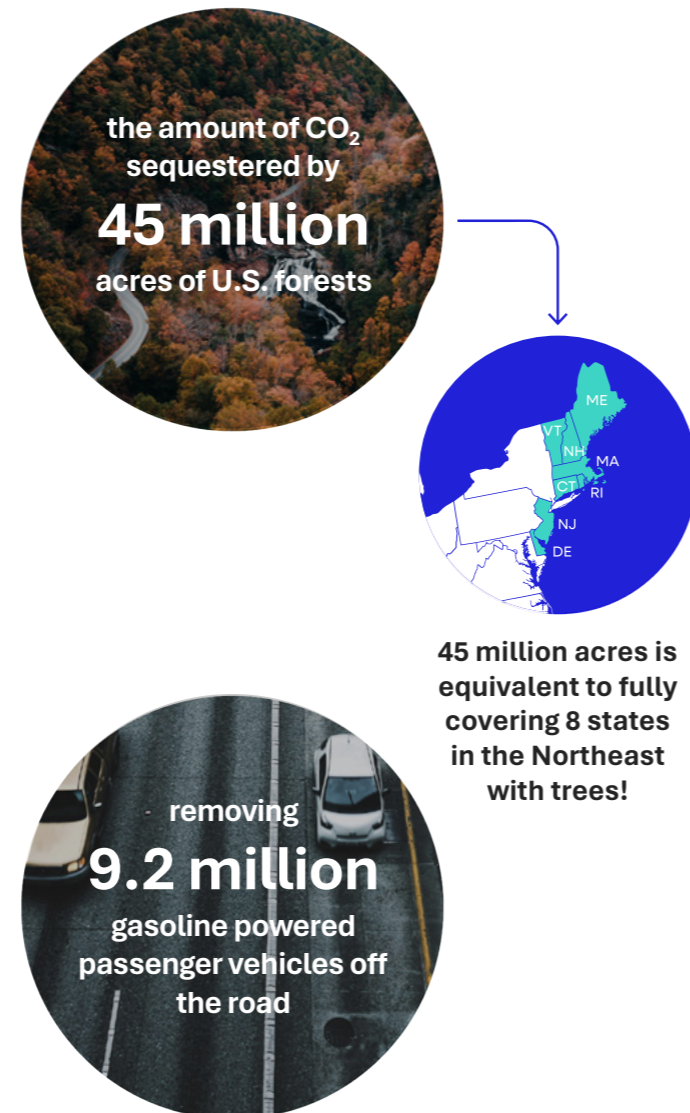
Reworld Thermomechanical Treatment Facilities (TTFs) and ReKiln Fuels solutions recover value from non-recyclable waste. By using these materials as a fuel source to generate energy or produce alternate fuels, these solutions help avoid methane emissions that would otherwise be associated with landfilling.

In addition to climate benefits, these solutions:

- Advance circularity by recycling metals and other materials, including potential beneficial use of residue for aggregate.
- Replace fossil fuel by generating electricity and provide high-BTU alternative fuels for energy intensive industries such as cement and lime manufacturing.

- Provide solutions for challenges that the waste sector faces and provide sustainable options and support landfill diversion.

Every year, Reworld TTFs and ReKiln Fuels avoid nearly 40M metric tons of GHG on a lifecycle basis (when the benefit of landfill methane avoidance is considered). These GHG savings are equivalent to:



Did you know?

The U.S. waste management sector has the potential to reduce GHG emissions significantly.

When residential, commercial and industrial waste streams are diverted away from landfills nearly 1 billion metric tons of greenhouse gas emissions can be avoided. This can be achieved by adopting the European Union's model that increases recycling, reduces landfilling and uses TTFs to manage waste remaining after recycling.

The potential avoided GHG impact is equivalent to removing 310 million cars from the road per year, or powering 275 million American homes for a year, or closing down 350 coal plants for a year, or the carbon captured by 1.3 billion acres of forest (the size of more than half of the United States).



“Moss, ferns, and young plants thrive on what once seemed like an end. A reminder that nature wastes nothing.”
Olympic National Park, Washington, USA
Praneeth Annam, Manager, Environmental, Florham Park, NJ

Thermomechanical Treatment

The Challenge

Today, landfilling remains the most common form of waste management in the U.S., with 290 million tons of municipal trash and 250 million tons of commercial and industrial waste generated each year. Despite its widespread use, landfilling ranks at the bottom of the waste management hierarchy and creates long-term environmental and management liabilities. For waste that cannot be reduced, reused or recycled, organizations are increasingly seeking alternatives that recover value while reducing reliance on landfill disposal.

Our Solution

Our Thermomechanical Treatment Facilities (TTFs) provide an alternative to landfilling for waste that remains after recycling. Beyond safely managing waste, TTFs recover metal, reduce waste volume, help avoid landfill methane emissions and generate energy. Many facilities offer opportunities for beneficial ash reuse, driving circularity even further.

Unlike solar, wind and other traditional energy sources, TTFs are dual purpose: they provide critical infrastructure for waste management while generating reliable renewable base load energy.



From the Control Room to power generation, thermomechanical treatment operations are safe and reliable.

Third-Party
Verified LCA*

TTFs avoid 2.4 metric tons
of CO₂e per ton of MSW
when landfill methane
is considered.

TTF electricity avoids
3.9 metric tons of CO₂e /MWh
delivered to the grid.

Learn how our TTFs help avoid greenhouse gases. Download our full, third-party verified LCA report.

<p>Provides Higher Energy Yield</p> <p>8x</p> <p>more energy per ton of waste than landfill gas to energy</p>	<p>Equivalent Solar Capacity</p> <p>43 GW</p> <p>equivalent solar capacity, 50% of total U.S. utility-scale installed capacity in 2023, for TTF GHG benefit</p>	<p>Replaces Coal</p> <p>4.4M</p> <p>TON</p> <p>equivalents of coal replaced by TTF waste processing</p>	<p>Avoids Methane</p> <p>477K</p> <p>METRIC TONS</p> <p>of methane emissions avoided annually</p>
<p>Reliable Baseload Power</p> <p>811K</p> <p>homes powered (electricity equivalent)</p>	<p>Recovers Metal</p> <p>429K</p> <p>TONS</p> <p>of metal recovered annually</p>	<p>Avoids Greenhouse Gases</p> <p>39M</p> <p>METRIC TONS</p> <p>of CO₂ equivalents</p>	<p>Destroys PFAS Forever</p> <p>99%</p>

ReKiln Fuels



The Challenge

The cement and lime industries provide essential materials for modern infrastructure but remain highly energy and emissions-intensive. Manufacturing these products requires high temperatures to convert limestone to calcine limestone into lime or clinker consuming large quantities of fuel and releasing significant quantities of carbon dioxide.

If the cement industry were a country, it would rank as the third-largest source of GHG emissions after the U.S. and China. The calcination process itself releases CO₂, so cement and lime manufacturers are turning to alternative fuels to replace coal, natural gas, oil and coke. The Global Cement and Concrete Association estimates the industry needs to expand its use of alternative fuels by over seven times to meet its GHG targets.

Our Solution

Our **ReKiln Fuels** solution helps decarbonize the cement, lime and pulp & paper industries by converting non-recyclable materials and waste into sustainable, lower-carbon fuels to displace fossil fuels.

Non-recyclable wastes, including plastics, paper, wood, carpet and rejects from Material Recovery Facilities (MPFs), in the recycling industry and off-specification petroleum products, are specifically mixed to create alternative fuel blends that meet kiln specifications. Once combusted, any remaining inert residuals are incorporated into the final cement product.

Our Impact

ReKiln Fuels is a win-win solution for both environment and business:

1:1

TON
One ton alternative fuel replaces one ton of coal

#1

continued independent supplier of alternative engineered fuels in North America

321K

METRIC TONS
of GHG emissions avoided by using alternative fuels in 2025

134K

TONS
of alternative fuels produced in 2025

Case Studies

Seed stewardship and obsolete stock disposal for Agricultural Sector

Reworld managed the disposal of off-spec, expired and outdated biotech seed varieties into **ReKiln Fuels**. Each batch was fully tracked with a Certificate of Destruction upon completion.

PPE and mask disposal for Healthcare Sector

Reworld solved the disposal challenge of mixed, contaminated PPE and masks — materials conventional recycling cannot handle due to material complexity and pathogen risk.

Did you know?

ReKiln Fuels results in zero processing residue.

Once ReKiln Fuels are combusted, inert residuals are incorporated directly into the final cement product – meaning nothing from the fuel process goes to waste. A complete closed loop from non-recyclable waste to finished building material.



ReDrop



The Challenge

Wastewater is a byproduct of many manufacturing processes, creating ongoing challenges around water scarcity, regulatory compliance, infrastructure capacity and safe discharge.

One specific challenge is landfill leachate, which is a wastewater created when rainwater filters through waste in a landfill, requiring long-term collection and treatment.

These wastewaters need pretreatment before they can be safely discharged to the nation’s publicly-owned treatment works (POTWs).

Our Solutions

Reworld recycles industrial wastewater through centralized wastewater treatment (CWT) and other wastewater facilities.

Using characterization protocols, we help customers meet compliance requirements, reduce the burden on POTWs and safely process larger volumes of wastewater:

Analytics to Identify Water Reuse

We assess wastewater stream characteristics to assess treatment steps and to identify beneficial reuse opportunities, using advanced laboratory analytics at our facilities.

Pretreatment

Wastewater is treated through pH adjustment, oil-water separation, flocculation, sedimentation, filtration and activated carbon treatment. It is then discharged to a POTW for final treatment before returning to the natural water cycle.

Oily Water & Petroleum Recovery

We separate oil from water returning used oil for recycling into new products such as fuel and lubricants.

Our Impact

In 2025, we managed millions of gallons of wastewater through our ReDrop® solution.

225M

GALLONS

of customer water pretreated for recycling

4.4M

GALLONS

of petroleum recovered from oily water for resale

19

TTFs

with zero discharge of process water

5

TTFs

reusing wastewater as process water

28

FACILITIES

CWTs and WWTs

25M

GALLONS

wastewater reused in operations

Case Study

Beneficial Reuse of Water

This wastewater solution separates water from contaminants for beneficial reuse and recycling, while enabling energy recovery from recovered contaminants.

Our Taunton, MA MPF treats **over 15 million gallons** of wastewater annually.

Much of this treated water is sent to our TTF in West Wareham, MA for beneficial reuse. Combined with other sources of wastewater, we reuse over 18.6 million gallons of reclaimed wastewater annually, including from industrial generators and landfills. With no connection to public water, the TTF also harvests rainwater for use as process water. Minimizing potable water use in the area is critical to ensure water availability for the region’s large cranberry bogs.



Jökulsárlón Iceland, Caroline Clark, Engineer, Environmental – Compliance Florham Park, NJ

ReMove and Industrial Services



The Challenge

Managing waste requires more than disposal. Organizations must coordinate transportation, equipment, regulatory compliance, tracking and reporting across multiple waste streams and locations. As waste streams become more complex, ensuring safe, efficient and compliant management can be resource intensive and operationally challenging.

Many organizations may face legacy environmental liabilities, contaminated sites and specialized waste streams that require technical expertise and field services beyond traditional waste transportation.

Our Solutions

ReMove

Our waste logistics solution handles all aspects of removal, transport and disposal of waste materials, including tracking and reporting. From trucks, specialty trailers and tankers, Reworld manages logistics execution end to end, coordinating the appropriate carriers and equipment based on waste type, volume, routing and regulatory requirements.

Industrial Field Services

Our Industrial Field Services provide field-based support for complex waste management and environmental remediation projects. Services include

site cleanup, waste characterization, hazardous material management and lab pack, helping customers safely manage waste while supporting environmental restoration and future site use.

Refinery Services

Our Refinery Services Group recovers value from petroleum refining and storage operations. Residue recovered from tanks, vessels and refining operations can be processed for reuse, supporting resource recovery and reducing waste.

Our Capacity and Impact

2,600

ASSETS

including tractors, specialty trucks, railcars, boats and more

21

FACILITIES

equipped to deploy urgent and emergency response services

94M

GALLONS

petroleum and wastewater processed in 2025

7M

GALLONS

onsite storage capacity

Case Study

Re-refining petroleum – a finite resource and critical commodity in our economy

Our Refinery Services Group (RSG), located in the heart of Texas’ “Refinery Row”, offers a cradle-to-grave solution to the refinery sector’s complex hazardous and non-hazardous waste challenges:

- Our Marine Terminal, strategically placed on the Houston Ship Channel provides turnkey industrial and waste management services to the maritime industry from Corpus Christi, TX to Lake Charles, LA.
- Our patented Mono and Twin Spin tank cleaning systems allow for safe and efficient cutting, agitation, liquefaction and extraction of solid petroleum tank residue. The resulting sludge is then transported to one of our nearby facilities and treated, refined and/or recycled.
- Our Highway 225 facility is a qualified refinery, allowing for a refinery-to-refinery exemption to facilitate recycling and distribution of petroleum products that could otherwise be considered a hazardous waste.



📷 Reworld OshKosh at the Future You Career Fair



From Hawaii to New Jersey, our teams rolled up their sleeves, standing alongside our communities on World Clean Up Day in September, 2025.



Appendix

Inside this Section

35 Data Tables

36 Glossary of Terms

Data Tables

Performance Data ^{1,4,5}	2025	2024	2023	2022	2021
Workforce					
Total employees	4,180	4,417	4,485	3,939	3,748
Safety and Health					
Employee DART	0.91	1.06	0.72	0.78	0.86
Employee TRIR	1.56	1.58	1.38	1.11	1.25
Assets					
Thermomechanical Treatment Facilities (TTFs)	32	36	38	38	38
Electrical generation nameplate capacity (MW)	1,375	1,434	1,488	1,488	1,488
Waste processing capacity (TPD)	52,615	54,765	56,911	56,911	56,911
Material Processing Facilities (MPFs)	41	40	39	23	19
Transfer Stations	14	15	13	14	13
Vehicles	2,600	3,003	2,000	NA	NA
Waste (thousand tons)					
Total waste processed	19,430	20,806	20,824	20,765	21,118
Sustainably processed waste	19,153	20,242	20,295	20,488	20,848
Waste recycled/reused	1,595	1,831	1,841	988	1,016
Energy Recovery from TTF	17,468	18,711	18,815	20,025	20,392
Energy					
Net electrical generation (million MWh)	8.0	8.3	8.7	9.3	9.6
Steam export (billion pounds)	7.1	8.1	7.9	8.0	8.4
Alternative fuel (million MMBTU)	2.8	3.5	2.7	2.4	NR
GHG Emissions (million metric tons CO₂e)					
Net lifecycle GHG reduction	38.5	41.1	41.2	43.6	44.4
Gross Metals Recycled (thousand tons)					
Total	432	467	489	516	546
Ferrous	393	423	450	481	507
Non-Ferrous	39	44	38	34	38
Environmental Performance					
TTF stack test compliance rate	99.86%	99.97%	99.97%	100.00%	100.00%
TTF CEMS compliance rate	99.96%	99.97%	99.97%	99.97%	99.98%
MPF water discharge compliance rate	99.96%	99.96%	99.96%	99.94%	99.95%

WORKFORCE DATA ^{1,2}	2025	2024	2023	2022	2021
Workforce Composition					
Women as a percentage of the total workforce	14	14	14	13	12
People of Color as a percentage of U.S. workforce	36	36	35	33	32

WORKFORCE DATA ^{1,3}	American Indian	Black	White	Hispanic	Asian	Pacific Islander	Two or more races
Racial and Ethnic Composition of U.S. Workforce							
Executives	0	4	44	1	5	1	1
Directors	1	12	157	10	11	0	2
Managers	1	33	325	34	27	1	9
Professionals	5	59	440	60	27	3	9
Technical, sales and administrative	3	68	321	60	14	4	16
Laborers	23	432	1193	351	54	67	48
Total	33	608	2480	516	138	76	85

1 January 1 – December 31, unless otherwise indicated. Workforce and asset data reflect the organization as of December 31st of the reported year.
 2 Women are represented as a percentage of the entire workforce. People of Color are represented as a percentage of U.S. workforce, where race/ethnicity information is known.
 3 U.S. employees only. Job Categories are defined as follows: Executives (EEO category 1.1), Professionals (EEO category 2), Technical/Sales/ Administrative (EEO categories 3,4,5) and Laborers (EEO categories 6,7,8,9). EEO category 1.2 subdivided into Directors and Managers. Totals may not match total U.S. employees due to exclusion of unspecified employees.
 4 NR - Not Reportable
 5 NA - Not Applicable

Glossary of Terms

AEF	Alternative Engineered Fuel
APHIS	Animal & Plant Health Inspection Services
CEMS	Continuous Emissions Monitoring System
CO2	Carbon Dioxide
CO2e	Carbon Dioxide Equivalent
DART	Days Away, Restricted, Transfer Rate
ERG	Employee Resource Group
FTE	Full Time Employee
GHG	Greenhouse Gas
H&S	Health & Safety
HBCU	Historically Black Colleges and Universities
LCA	Lifecycle Assessment
LFGTE	Landfill Gas To Energy
MMBTU	Million British Thermal Units
MPF	Material Processing Facility
MT	Metric Tons
MSW	Municipal Solid Waste
MW	Megawatt
MWh	Megawatt hour
MWhe	Megawatt hour equivalent
PFAS	Per- & Polyfluoroalkyl Substances
POTW	Publicly Owned Treatment Works
TRIR	Total Recordable Incident Rate (same as Total Case Incident Rate)
TPD	Tons per day
TTF	Thermomechanical Treatment Facility
RCRA-TSDF	Resource Conservation & Recovery Act - Treatment, Storage, Disposal Facility

Contact

Global Headquarters
 Reworld Waste, LLC.
 100 Park Avenue
 Florham Park, NJ 07932
 Sustainability@reworldwaste.com

Disclaimer

This report may contain forward-looking statements, which rely on a number of estimates, projections and assumptions concerning future events. All statements contained in this report other than statements of historical fact, including statements relating to trends in projections or expectations relating to the expected effects of our initiatives, strategies and plans, as well as trends in, projections or expectations regarding the financial results and long-term growth model of Reworld Holding Corporation (“Reworld”) and its respective subsidiaries and affiliates (collectively, the “Company”) are forward-looking statements. Forward-looking statements can generally be identified by the use of forward-looking words such as “anticipate,” “assume,” “believe,” “continue,” “could,” “estimate,” “expect,” “intend,” “may,” “plan,” “potential,” “predict,” “project,” “future,” “will,” “seek,” “foreseeable,” and the negative versions of these words or similar terms and phrases. The forward-looking statements contained in this report are based on management’s current expectations and are not guarantees of future performance. The forward-looking statements are subject to various risks, uncertainties, assumptions or changes in circumstances that are difficult to predict or quantify. The Company’s expectations, beliefs and projections are expressed in good faith and the Company believes there is a reasonable basis for them. However, there can be no assurance that management’s expectations, beliefs and projections will result or be achieved. Should any risks or uncertainties materialize, or should any of the Company’s assumptions prove incorrect, the Company’s actual results may vary in material respects from those projected in these forward-looking statements. Any forward-looking statement contained in this report speaks only as of the date of this report and is expressly qualified in its entirety by the cautionary statements included herein. Factors or events that could cause the Company’s actual results to differ may emerge from time to time, and it is not possible to predict all of them. The Company may not actually achieve the plans, intentions or expectations disclosed in its forward-looking statements and you should not place undue reliance on these forward-looking statements. The Company undertakes no obligation to publicly update or review any forward-looking statement, whether as a result of new information, future developments or otherwise, except as may be required by any applicable securities laws. In addition, forward-looking and other statements regarding environmental and other sustainability efforts and aspirations are not an indication that these statements are material to investors or require public disclosure. Historical, current, and forward-looking environmental and other sustainability-related statements may be based on standards for measuring progress that are still developing, internal controls and processes that continue to evolve and assumptions that are subject to change in the future, including future rulemaking.

Terms such as “impact,” “green,” “transition,” “energy transition,” “net zero,” “decarbonization,” “sustainable,” and “sustainability” can be subjective in nature, and there is no representation or guarantee that these terms, as used by Reworld, or judgment exercised by Reworld or its affiliates, will reflect the beliefs or values, policies, principles, frameworks or preferred practices of any particular investor or other third-party or reflect market trends.

Statistics and metrics relating to sustainability matters, including GHG emissions metrics, are estimates and may be based on estimates, estimated information and assumptions (which may prove to be inaccurate) or developing standards (including our internal standards and policies).

There can be no assurance that our policies and procedures as described in this report will continue; such policies and procedures could change, even materially. We are permitted to determine in our discretion that it is not feasible or practical to implement or complete certain of our initiatives, policies and procedures based on cost, timing or other considerations. References to case studies in this report are intended to be illustrative and are not intended to be used as an indication of the current or future performance.



Reworld[®]
.....

Sustainable
Waste Solutions

reworldwaste.com